

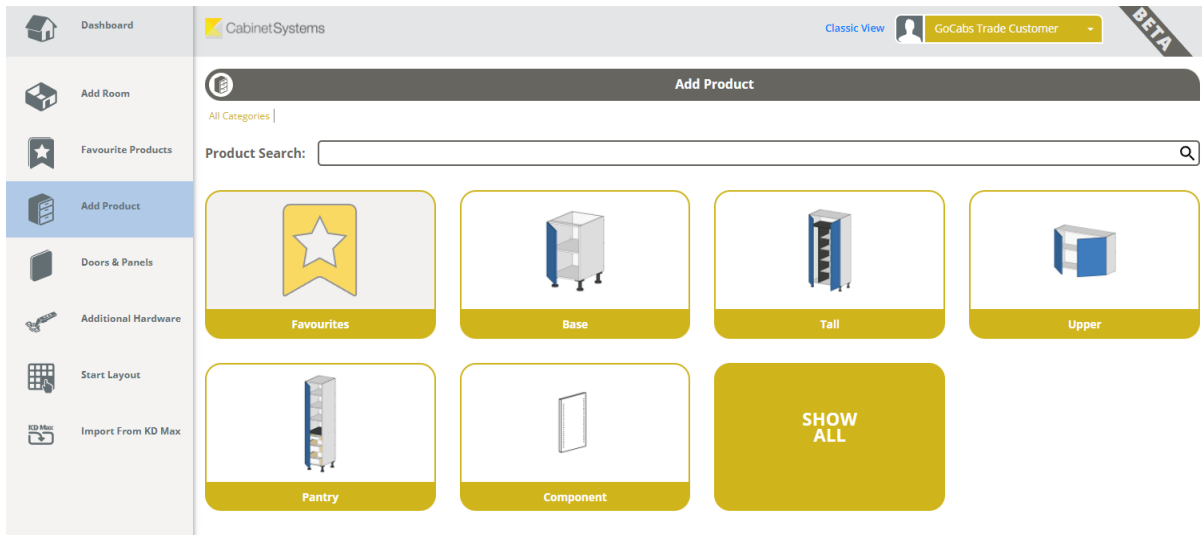


Cabinet Systems

How to guide - 2 Part broom cabinets

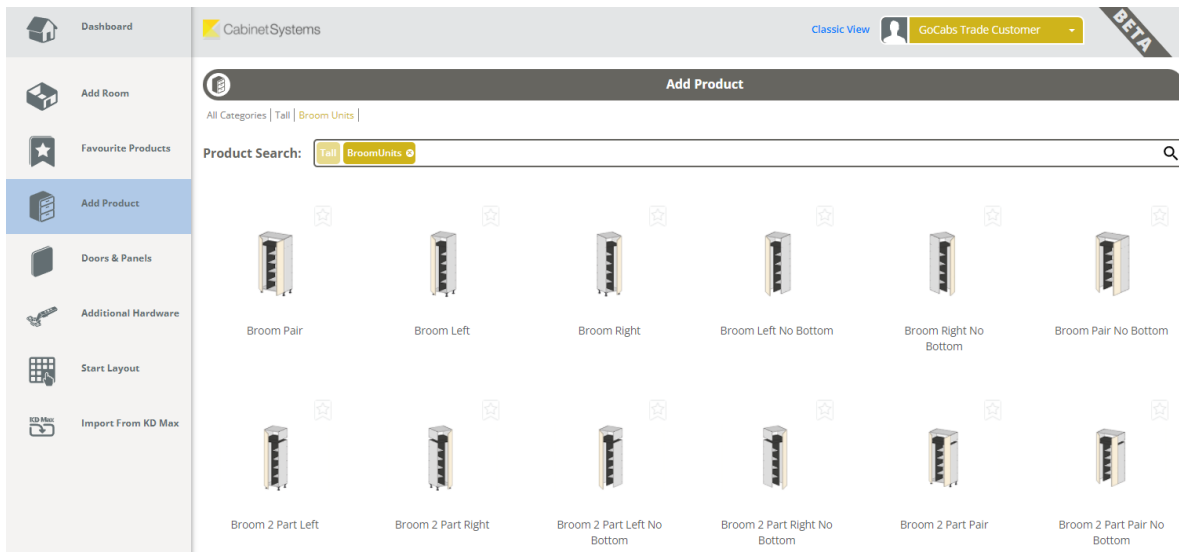
Locate the product

1. Navigate to the “Add Product” tab



2. Select “Tall” - “BroomUnits” - Then make your selection - There are 2 part broom cabinets with and without the bottom in Left, Right and Pair configurations.

Standard one piece broom cabinets are located here also.



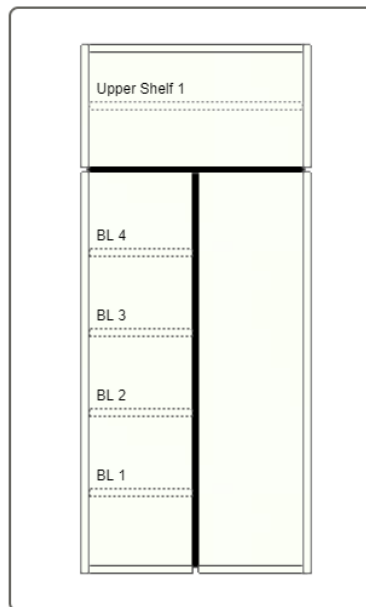


Cabinet Systems

3. Flow through the familiar tabs “**Sizes**” - “**Materials**” - “**Doors**” to make your further edits

Editing in the “**Shelves**” tab

1. As you make your changes, the preview will change according to what you have selected - **TIP: Keep an eye on this visual cabinet preview - this can help you pick up on any spacing errors and applies to ALL cabinets**



2. **Upper Shelves** - The upper shelf section will be the full width of the cabinet and have no vertical partition
3. **Horizontal Partition** - Set this at the height you would like the cabinet split - It is measured from the top of the bottom to the center of the partition.
4. **Lower Shelves** - You will have Bottom Left Shelves and Bottom Right Shelves - They can be changed separately, allowing you to remove one side completely to create the tall storage area
5. **Vertical Partition** - Nominate the location for the vertical partition in the bottom section of your cabinet - It is measured from the inside of the left end to the center of the partition.